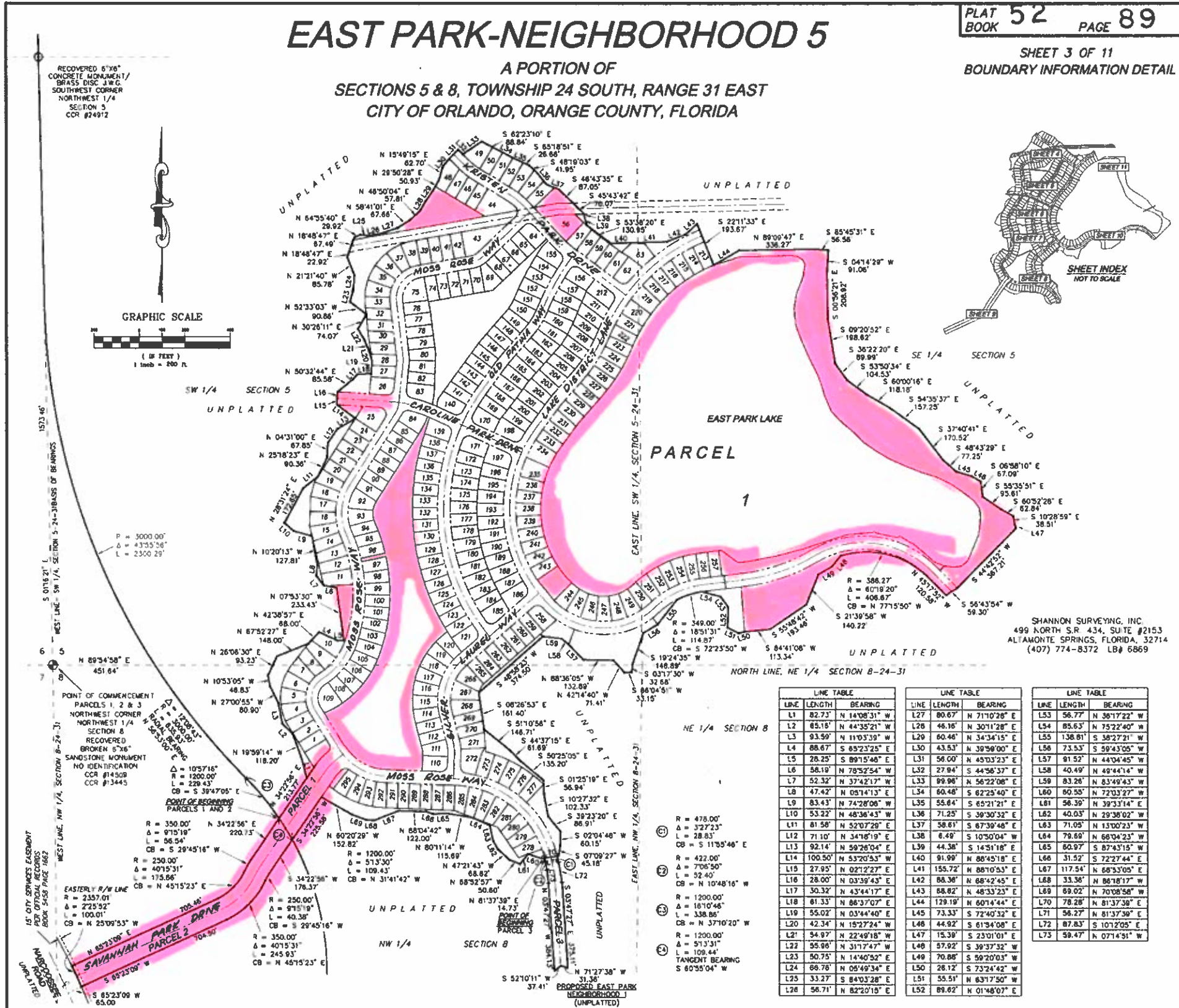


EAST PARK-NEIGHBORHOOD 5

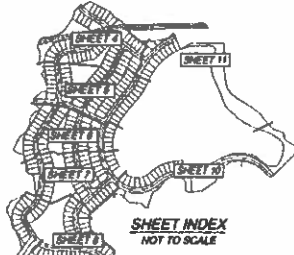
A PORTION OF
SECTIONS 5 & 8, TOWNSHIP 24 SOUTH, RANGE 31 EAST
CITY OF ORLANDO, ORANGE COUNTY, FLORIDA

PLAT BOOK 52 PAGE 89

SHEET 3 OF 11
BOUNDARY INFORMATION DETAIL



RECOVERED 6"X6" CONCRETE MONUMENT/ BRASS DISC 3/4" G. SOUTHWEST CORNER NORTHWEST 1/4 SECTION 5 CCR #24912



POINT OF COMMENCEMENT PARCELS 1, 2 & 3 NORTHWEST CORNER SECTION 8 RECOVERED BROKEN 6"X6" SANDSTONE MONUMENT NO IDENTIFICATION CCR #14508 CCR #13445

POINT OF BEGINNING PARCELS 1 AND 2

EASTERN 1/4 R/W LINE

SHANNON SURVEYING, INC.
499 NORTH S.R. 434, SUITE #2153
ALTAMONTE SPRINGS, FLORIDA, 32714
(407) 774-8372 LB# 6869

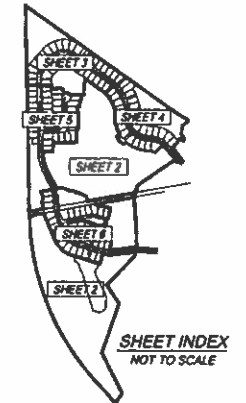
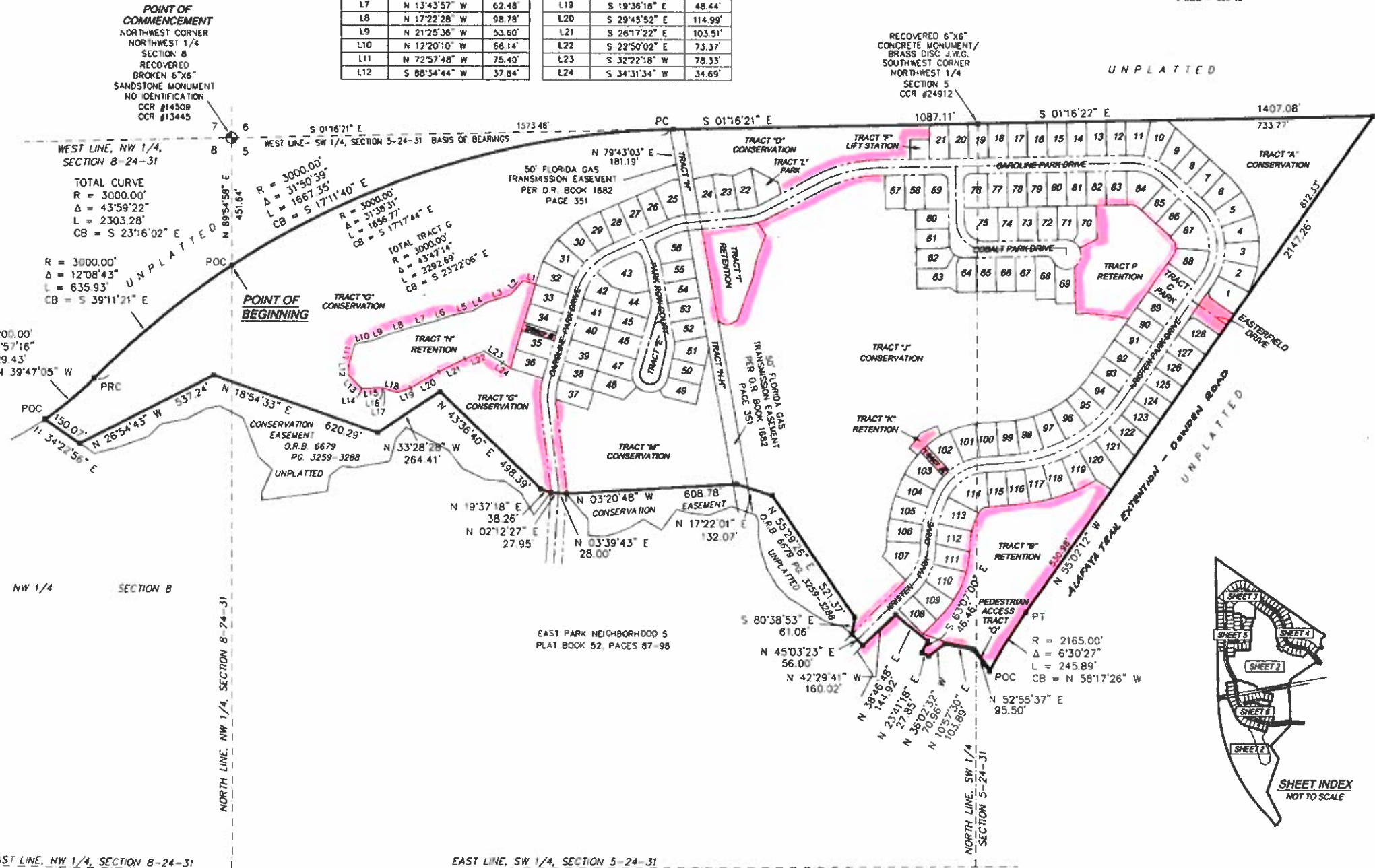
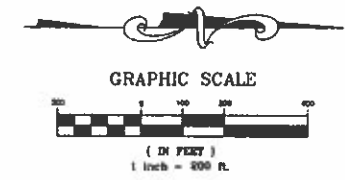
LINE	LENGTH	BEARING	LINE	LENGTH	BEARING	LINE	LENGTH	BEARING
L1	82.73	N 14°08'31" W	L27	80.67	N 71°10'28" E	L53	56.77	N 38°17'22" W
L2	65.16	N 44°35'21" W	L28	46.16	N 30°11'28" E	L54	85.63	N 75°22'40" W
L3	93.59	N 11°03'39" W	L29	60.46	N 34°34'15" E	L55	138.81	N 58°27'21" W
L4	88.67	S 85°23'25" E	L30	43.53	N 39°59'00" E	L56	73.53	S 59°43'05" W
L5	28.25	S 89°15'48" E	L31	58.00	N 45°03'23" E	L57	91.52	N 44°04'45" W
L6	58.19	N 78°52'54" W	L32	27.94	S 44°56'37" E	L58	40.49	N 49°44'14" W
L7	52.32	N 37°42'17" W	L33	89.96	N 56°22'08" E	L59	83.26	N 83°49'43" W
L8	47.42	N 05°14'13" E	L34	60.48	S 62°25'40" E	L60	80.58	N 72°03'27" W
L9	83.43	N 74°28'06" W	L35	55.64	S 65°21'21" E	L61	58.39	N 39°33'14" E
L10	53.22	N 48°36'43" W	L36	71.25	S 39°30'32" E	L62	40.05	N 29°36'02" W
L11	81.58	N 52°07'29" E	L37	58.61	S 67°39'46" E	L63	71.05	N 15°00'23" W
L12	71.10	N 34°18'19" E	L38	6.49	S 10°50'04" W	L64	79.60	N 68°04'23" W
L13	92.14	N 59°26'04" E	L39	44.38	S 14°51'18" E	L65	60.97	S 87°43'15" W
L14	100.50	N 53°20'53" W	L40	91.99	N 88°45'18" E	L66	31.52	S 72°27'44" E
L15	27.95	N 02°12'27" E	L41	155.72	N 88°10'53" E	L67	117.54	N 68°33'05" E
L16	28.00	N 03°39'43" E	L42	88.36	N 68°42'45" E	L68	33.36	N 86°18'17" W
L17	30.32	N 43°44'17" E	L43	58.82	N 48°33'25" E	L69	69.02	N 70°08'58" W
L18	81.33	N 86°37'07" E	L44	129.19	N 60°14'44" E	L70	78.28	N 81°37'39" W
L19	55.02	N 03°44'40" E	L45	73.33	S 72°40'32" E	L71	56.27	N 81°37'39" E
L20	42.34	N 19°27'24" W	L46	44.92	S 61°34'08" E	L72	87.83	S 10°12'05" E
L21	54.97	N 22°49'18" W	L47	15.39	S 23°01'01" E	L73	59.47	N 07°14'51" W
L22	95.96	N 31°74'47" W	L48	57.02	S 39°37'32" E			
L23	70.75	N 14°40'52" E	L49	70.88	S 99°20'03" W			
L24	86.78	N 08°49'34" E	L50	28.12	S 73°24'42" E			
L25	33.27	S 84°03'28" E	L51	55.51	N 63°17'50" W			
L26	58.71	N 82°20'19" E	L52	89.82	N 01°48'07" E			

EAST PARK-NEIGHBORHOODS 6 & 7

A PORTION OF
SECTIONS 5 & 8, TOWNSHIP 24 SOUTH, RANGE 31 EAST
CITY OF ORLANDO, ORANGE COUNTY, FLORIDA

SHEET 2 OF 6
KEY MAP

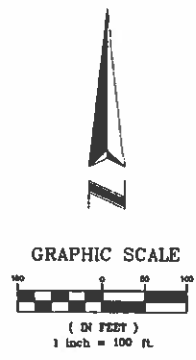
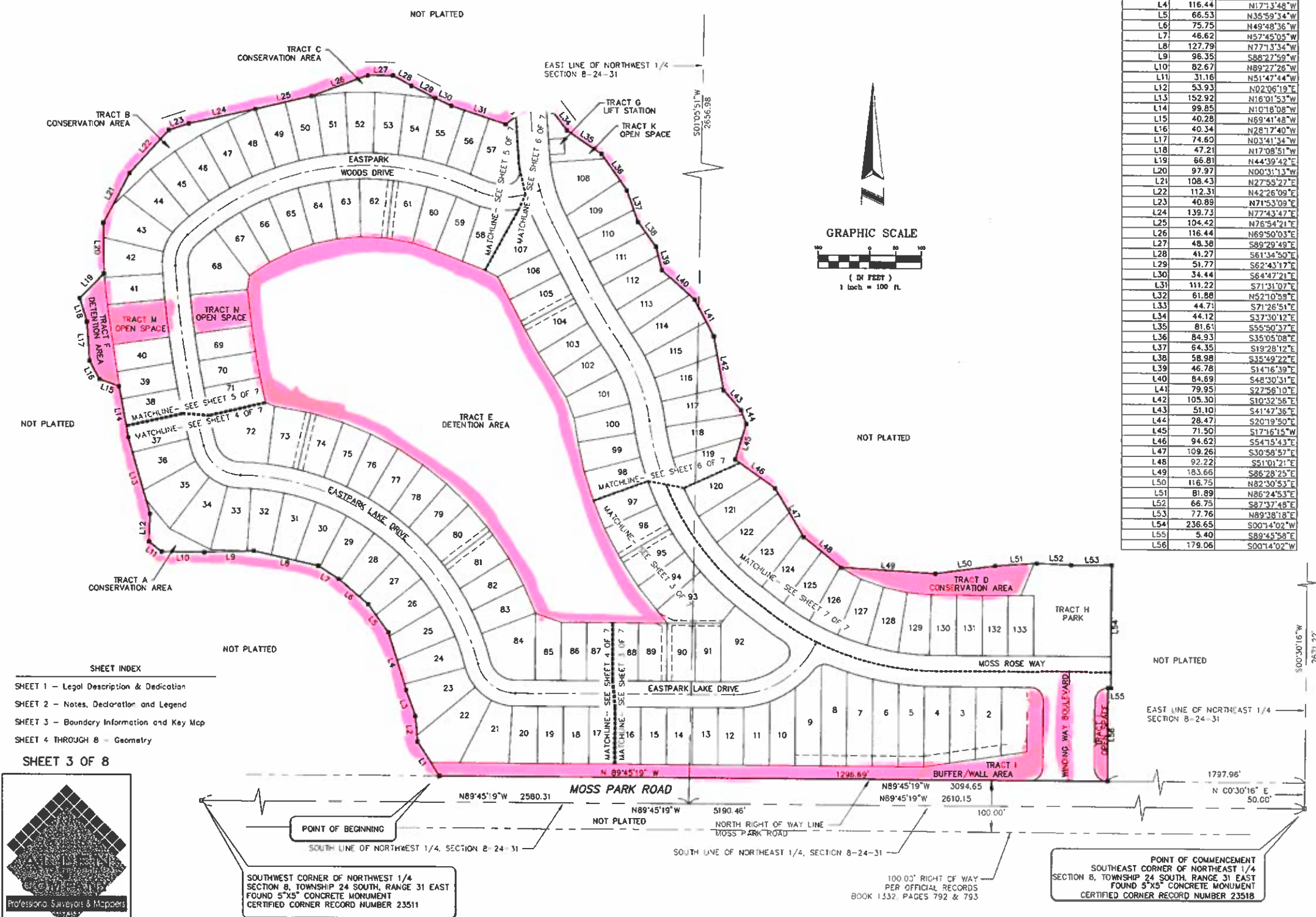
LINE TABLE			LINE TABLE		
LINE	BEARING	LENGTH	LINE	BEARING	LENGTH
L1	N 16°51'28" E	46.81'	L13	S 45°20'26" W	59.08'
L2	N 47°30'36" W	66.85'	L14	S 42°06'48" W	7.24'
L3	N 18°35'47" W	87.02'	L15	S 03°28'00" E	63.48'
L4	N 30°16'54" W	59.37'	L16	S 04°01'56" W	11.61'
L5	N 12°24'07" W	73.06'	L17	S 16°21'36" W	3.32'
L6	N 18°09'02" W	84.08'	L18	S 16°21'36" W	52.15'
L7	N 13°43'57" W	62.48'	L19	S 19°36'18" E	48.44'
L8	N 17°22'28" W	98.78'	L20	S 29°45'52" E	114.99'
L9	N 21°25'36" W	53.60'	L21	S 26°17'22" E	103.51'
L10	N 12°20'10" W	66.14'	L22	S 22°50'02" E	73.37'
L11	N 72°57'48" W	75.40'	L23	S 32°22'18" W	78.33'
L12	S 88°34'44" W	37.64'	L24	S 34°31'34" W	34.69'



THE LAKES AT EASTPARK

A PORTION OF SECTION 8, TOWNSHIP 24 SOUTH, RANGE 31 EAST
CITY OF ORLANDO, ORANGE COUNTY, FLORIDA

LINE	LENGTH	BEARING
L1	78.18	N32°40'01"W
L2	49.42	N04°57'20"W
L3	52.93	N20°12'08"W
L4	116.44	N17°13'48"W
L5	66.53	N35°59'34"W
L6	75.75	N49°48'36"W
L7	46.62	N57°45'05"W
L8	127.79	N77°13'34"W
L9	96.35	S88°27'59"W
L10	82.67	N89°27'26"W
L11	31.16	N51°47'44"W
L12	53.93	N02°06'19"E
L13	152.92	N16°01'53"W
L14	99.85	N10°18'08"W
L15	40.28	N69°41'48"W
L16	40.34	N28°17'40"W
L17	74.60	N03°41'34"W
L18	47.21	N17°08'51"W
L19	66.81	N44°39'42"E
L20	97.97	N00°31'13"W
L21	108.43	N27°55'27"E
L22	112.31	N42°26'09"E
L23	40.89	N71°53'09"E
L24	139.73	N77°43'47"E
L25	104.42	N76°54'21"E
L26	116.44	N69°50'03"E
L27	48.38	S89°29'49"E
L28	41.27	S61°34'50"E
L29	51.77	S62°43'17"E
L30	34.44	S64°47'21"E
L31	111.22	S71°31'07"E
L32	61.88	S52°10'59"E
L33	44.71	S71°26'51"E
L34	44.12	S37°30'12"E
L35	81.61	S55°50'37"E
L36	84.93	S35°05'08"E
L37	64.35	S19°28'12"E
L38	58.98	S35°49'22"E
L39	46.78	S14°16'39"E
L40	84.69	S48°30'31"E
L41	79.95	S27°56'10"E
L42	105.30	S10°32'56"E
L43	51.10	S41°47'36"E
L44	28.47	S20°19'50"E
L45	71.90	S17°16'15"W
L46	94.62	S54°15'43"E
L47	109.26	S30°58'57"E
L48	92.22	S51°01'21"E
L49	183.66	S86°28'25"E
L50	116.75	N82°30'53"E
L51	81.89	N86°24'53"E
L52	66.75	S87°37'48"E
L53	77.76	N89°38'18"E
L54	236.65	S00°14'02"W
L55	5.40	S89°45'58"E
L56	179.06	S00°14'02"W



- SHEET INDEX**
- SHEET 1 - Legal Description & Dedication
 - SHEET 2 - Notes, Declaration and Legend
 - SHEET 3 - Boundary Information and Key Map
 - SHEET 4 THROUGH 8 - Geometry
- SHEET 3 OF 8**



16 EAST PLANT STREET
WINTER GARDEN, FLORIDA 34787
(407) 654-5355

Ravina at East Park

